

Rhodes Red Angus Ranch

Annual Production Sale

New Date
and Time!

Tuesday, February 14, 2023

2 p.m. CST - At the Ranch - 4.5 mi. E & 2.5 mi. N of Faulkton, SD

*Selling
81 Bulls*

Red Angus & Black
Red-Carrier Angus Bulls

*Committed to raising trouble-free,
sustainable Angus cattle.*



Rhodes
Red Angus

DVAuction

Jordan Rhodes: 605-228-9301 - jordan_rhodes@live.com
Jackson Rhodes: 605-216-7841

Welcome

Rhodes
Red Angus Ranch

Dear Customers and Friends,

On behalf of my entire family, we would like to start by thanking all of you for considering our program as your genetic supplier. It is truly humbling to receive such tremendous support from our past customers, as well as all the many new inquiries we have received, and the semen purchases made from people around the world this last year. We are sincerely blessed and grateful.

I spend a lot of time thinking about what keeps commercial producers in business and our responsibilities as seedstock producers to help breeders from an efficiency standpoint. With that, I have narrowed down several key components to help with everyone's success. I truly believe that cattle should work hard for us, and we should not work hard for them. That is why we do our absolute best to develop trouble-free cows that breed back on a timely basis and consistently raise great calves. We are committed to raising cattle that get the job done right every time and they must continue this role in sustainable production for at least a decade. In order to accomplish this, we strive to create cows with total accountability - having maternal and structural integrity where they are designed to last with a record of proven history. Although not everything is perfect in our cowherd, we are dedicated to these principles and we are enthusiastic to make necessary improvements every day.

Another goal for our customers is to identify things that require small adjustments, whereas we will grow and improve together. We understand that perfection is a moving target. Therefore, the only way to achieve this objective is by recognizing what our cows do great and what they lack. Together we can select genetics that are complementary to your program and in your environment.

There was a time in my life when I got caught up on trying to decide which was the best bull out there. However, the more time I have spent in this business, I came to the realization that this is a false reality. There is only the best bull for the best situation. With that said, not every bull we offer today will fit your specific situation. However, we do believe, without a doubt, that there are many bulls in this lineup today that will complement most cowherds around the country.

We are devoted to growing with our customers and make subtle corrections so we can all avoid big mistakes. We run our cows in a practical manner and challenge them to work hard so we are confident in their abilities to succeed in your program.

This is a strong offering, and we feel these bulls have an opportunity to go out and positively enhance the breed in many ways. Balanced cattle that are correct structurally will produce modern day steer weight requirements and their replacement heifers will indeed stand the test of time.

If you are ever in the area, you are always welcome to stop in to see our operation. We are happy to answer your questions and learn about your goals. Together we can get better.

Again, we sincerely thank you for spending your time with us on Valentine's Day to consider our program. Without your support, this wouldn't be possible. I am forever grateful for your trust in us. It has given us an opportunity to raise our children and have a lifestyle that's pretty incredible. Not everybody gets to do what they love for a living. Your support allows us to keep doing this, and we appreciate it beyond measure.

Sincerely,

Jordan Rhodes and our entire crew here at RREDS
Rhodes Red Angus Ranch
605-228-9301
jordan_rhodes@live.com



Catalog online at: rhodesredangusranch.com

Annual Production Sale

Tuesday, February 14, 2023

2 p.m. CST • At the Ranch

4.5 mi. E & 2.5 mi. N of Faulkton, SD

Auctioneer:

Matt Lowery..... 308-750-6119

Sale Day Numbers:

Jordan Rhodes605-228-9301
Jackson Rhodes 605-216-7841
Aaron Tenney.....208-320-8017

Sale Location:

At the Ranch
GPS Address: 16008 357th Ave. • Faulkton, SD 57438

Representatives:

Devin Warillow 780-581-4329
Castle Rock Marketing
Dennis Ginkens.....406-670-9839
Tri-State Livestock News
Jeff Kapperman 605-940-5104
Tri-State Neighbor
Donnie Leddy 605-695-0113
Cattle Business Weekly
Andrew Swanson.....507-829-4133
Farm & Ranch Guide
Will Bollum 507-244-0833
Western Ag Reporter

Retained Interest:

Retaining 1/3 semen interest and selling 2/3 semen interest and full possession.

Guarantee:

All of the bulls in this offering are guaranteed to pass a fertility and health examination. In the event of a bull failing a semen test or being injured, a suitable replacement will be furnished if available. We encourage buyers to purchase livestock loss of use and mortality.

Supplement Sheet:

Scrotal measurements and current weights and gains will be available on sale day.

Feeding & Delivery:

We will continue to feed and develop the bulls until late-March and April. Free nationwide delivery on bulls purchased for \$5,000 or more. We will do our part to provide a ride for bulls purchased for less at a fair rate.

Liability:

All persons attending the sale do so at their own risk.

Online Promotion:

Catalog & Other InformationRhodesRedAngusRanch.com
Catalogcowcampcatalogs.com
Catalog & Videos..... DVAuction.com
Facebook.....Rhodes Red Angus

Online Bidding:

Real-Time bidding is available through DVAuction.com. See page 2 for instructions to register before the sale to bid online.

Health Program:

We utilize an extensive preventive medicine/vaccination program to ensure our herd has every opportunity to optimize performance, fertility, and overall herd health. Spring Vaccination: BVD I & II, IBR, BRSV, PI3, Mannheimia hemolytica, Pastuerella multocida (Vista Once), 7-way clostridial (Vision 7), AHC Autogenous Mycoplasma bovis, Moraxella bovoculi, injectable dewormer (LongRange). Pre-conditioning prior to weaning: Vista Once, 7-way clostridial, Histophilus somnii (Vision 7/Somnus), AHC Autogenous Mycoplasma/Pinkeye. Weaning: IBR, BRSV, PI3 intranasal (Inforce 3), Vista Once, Vision7/Somnus, AHC Autogenous Mycoplasma/Pinkeye, injectable dewormer (Ivomec 1%) Deloused (Cleanup II). The bulls will also have passed a breeding soundness exam prior to delivery and will be vaccinated and ready for breeding.

Breeding Vaccination:

BVD I&II, IBR, BRSV, PI3, Campylobacter, 5-way leptospira (Virashield 6 VL5), AHC Autogenous Mycoplasma/Pinkeye, Fusobacterium necrophorum (Fusogard), Deloused (CleanupII). Herd Health programs are developed and overseen by Dr. Bode at the Animal Health Center in Faulkton, SD.

Terms & Conditions:

The terms of the sale are cash and all settlements must be made at the close of the auction. All breeding animals are guaranteed in accordance with the rules and regulations set forth by the Red Angus Association of America.

Catalog and Promotion:

Cow Camp Promotions
cowcamppromotions.com

DVAuction Broadcasting Real-time Auctions

Can't make the sale?

We are pleased to bring you real-time Internet bidding and a live broadcast of this sale through DV Auction. To watch or bid online, simply complete the following steps:

- 1) Visit the DVAuction web site at www.dvauction.com
- 2) Click on the "Register" tab
- 3) Enter a user name, password and your contact information.
- 4) Click on "Apply for Bidding."
 - Select the sale from the list of other auctions and click "Apply".
 - Complete the process by filling out the Banking & Lending information requested.
 - Be sure to include a personal contact at your bank, we will contact them in order to get a credit reference.
 - If you would prefer to be approved using your credit card, call (402) 316-5460.
 - Please be sure to apply for bidding at least a day in advance of the sale-every effort will be made to process your application in a timely manner.

DVAuction will contact you once you have been approved to bid. We do not provide buyer numbers until you have purchased a lot in the sale, and that number is only usable for that auction. After the sale contact the sale owner or manager to make arrangements for payment and delivery of your online purchases.

Please Note: High speed Internet access (DSL, T-1, or Broadband) is required to be able to bid successfully during the sale. If you have any questions, please contact DVAuction at (402) 316-5460 or (402) 474-5557 or email support@dvauction.com.

Proxy Bidding: If you can't access a computer during the sale, you can now place a "proxy bid" through DV Auction. Simply follow the instructions listed above, and as the sale date nears there will be a "Proxy Bidding" link under the sale listing on the main page of DV Auction. You can then place the maximum amount that you'd like to bid, and our system will represent your bid just as if you were there.

RED ANGUS FCCP MARKETING PROGRAMS

The Red Angus Feeder Calf Certification Program is the first step in differentiating your cattle to buyers, feedlots and packers.

Experience industry-leading return on investment for just the cost of an ear tag
- with no enrollment fees.

The Red Angus Association of America Marketing Team offers assistance to Red Angus bull customers at no charge.



Feeder Calf Certification Program



- Traceability to at least 50% Red Angus genetics
- Source verified to ranch of origin
- Group age verified

Eligible for Choice+ and G.O. Red Grids
No enrollment fee, 99¢/tag
840-compliant EIDs available upon request

**GENETICS
SOURCE • AGE**

RED ANGUS
RANCH TESTED. RANCHER TRUSTED.
RedAngus.org • (940) 226-4762



BIEBER LET'S ROLL B563

A
sire

BIEBER LET'S ROLL B563

Birth Date: 4/5/14 Category: 1A 100%
 BW: 100 WW: 742 YW: 1426 #1694879

BIEBER ROLLIN DEEP Y118

BIEBER ROOSEVELT W384
 BIEBER TILLY 399W
 BFCK CHEROKEE CNYN 4912
 BASIN PRIMROSE 0854

ProS	HB	GM														
94	66	29														
43%	31%	61%														
CED	BW	WW	YW	ADG	DMI	M	ME	HPG	CEM	ST	MARB	YG	CW	REA	FAT	
13	-0.2	71	117	0.29	2.41	27	4	15	6	17	0.31	0.09	37	0.31	0.03	
52%	75%	22%	19%	18%	98%	41%	53%	14%	65%	26%	70%	59%	15%	21%	69%	



Lot 1

lot

1

RREDS MR LET'S ROLL 229

Birth Date: 2/23/22 Category: 1A 100%
 BW: 83 WW: 769 #4642703

BIEBER LET'S ROLL B563

BIEBER ROLLIN DEEP Y118
 BASIN PRIMROSE 2043
 BJR MONU 4X-303
 AHF LAKOTA 843

ProS	HB	GM														
143	93	50														
2%	3%	25%														
CED	BW	WW	YW	ADG	DMI	M	ME	HPG	CEM	ST	MARB	YG	CW	REA	FAT	
13	-2.2	66	110	0.27	1.80	26	1	11	7	22	0.42	0.05	37	0.32	0.01	
42%	43%	28%	24%	21%	82%	51%	39%	62%	52%	1%	48%	40%	9%	15%	38%	

This calf deserves to start the sale. He exhibits as much breed character and balance that you can ask for. He is sound, hormonally correct and has phenotype to burn. He is a bull you can use in a lot of situations.



RREDS BLUE PRINT H001

B **RREDS BLUE PRINT H001**
sire Birth Date: 1/9/20 Category: 1A 100%
 BW: 67 WW: 770 YW: 1320 #4287851

GLACIER CHATEAU 744
 RREDS PRIMROSE F835

LMAN KING ROB 8621
 GLACIER REBALA
 RREDS SENECA 731C
 STRA PRIMROSE 530

ProS	HB	GM													
58	52	7													
85%	54%	91%													
CED	BW	WW	YW	ADG	DMI	M	ME	HPG	CEM	ST	MARB	YG	CW	REA	FAT
15	-4.7	59	94	0.22	2.32	29	16	9	10	17	0.18	-0.07	24	0.61	0.03
23%	10%	60%	62%	63%	96%	24%	96%	82%	9%	31%	90%	8%	48%	5%	64%



Lot 2

lot **2** **RREDS BLUEPRINT K273**
 Birth Date: 2/15/22 Category: 1A 100%
 BW: 71 WW: 740 #4681035

RREDS BLUE PRINT H001
 RREDS PRIMROSEG954

GLACIER CHATEAU 744
 RREDS PRIMROSE F835
 S A V RECHARGE 3436
 BASIN PRIMROSE 4167

ProS	HB	GM													
70	62	7													
85%	35%	96%													
CED	BW	WW	YW	ADG	DMI	M	ME	HPG	CEM	ST	MARB	YG	CW	REA	FAT
14	-5.1	58	94	0.23	1.87	23	13	11	9	18	0.19	0.07	18	0.18	0.03
28%	6%	61%	57%	51%	86%	71%	95%	51%	21%	16%	95%	51%	69%	39%	82%

A real interesting calving ease bull. This Blueprint son has great breed character. He is a bull with a proven pedigree yet is out-crossed to nearly the entire breed. He is bred for maternal balance and should make an excellent set of females.



Lot 3

lot **3** **RREDS BLUEPRINT K201**
 Birth Date: 1/9/22 Category: 1A 100%
 BW: 76 WW: 719 #4681121

RREDS BLUE PRINT H001
 RREDS LAKOTA H081

GLACIER CHATEAU 744
 RREDS PRIMROSE F835
 STRA RELENTLESS
 MLK CRK LAKOTA 095

ProS	HB	GM													
89	52	37													
55%	55%	51%													
CED	BW	WW	YW	ADG	DMI	M	ME	HPG	CEM	ST	MARB	YG	CW	REA	FAT
13	-2.9	66	103	0.23	1.67	31	7	12	8	14	0.32	0.00	35	0.46	0.02
52%	30%	31%	38%	48%	70%	8%	73%	34%	26%	64%	73%	21%	13%	5%	51%

One of the more complete calving ease bulls you will find. Excellent type, he is loose-hided, soft and sound, and will work on a lot of pedigrees.



lot

4

RREDS BLUEPRINT K227

Birth Date: 1/22/22 Category: 1A 100%
 BW: 80 WW: 731 #4689065

RREDS BLUE PRINT H001		GLACIER CHATEAU 744													
RREDS PRIMROSE H026		RREDS OCEAN FRONT PROPERTY													
		RREDS 8056													
ProS	HB	GM													
62	28	34													
91%	92%	58%													
CED	BW	WW	YW	ADG	DMI	M	ME	HPG	CEM	ST	MARB	YG	CW	REA	FAT
13	-1.7	71	118	0.29	1.88	23	10	11	8	11	0.14	-0.10	40	0.78	0.01
40%	53%	14%	12%	12%	87%	74%	87%	62%	27%	89%	98%	3%	6%	1%	31%

This Blueprint son has a little more performance and frame. If you have a set of moderate females that you would like to power up, consider this bull.



Lot 5

lot

5

RREDS BLUEPRINT K241

Birth Date: 1/27/22 Category: 1A 100%
 BW: 79 WW: 716 #4681059

RREDS BLUE PRINT H001		GLACIER CHATEAU 744													
RREDS ANASCO H067		RREDS PRIMROSE F835													
		ELLINGSON ROUGHRIDER 4202													
		KLEIN ANASCO 310A													
ProS	HB	GM													
75	53	22													
78%	54%	81%													
CED	BW	WW	YW	ADG	DMI	M	ME	HPG	CEM	ST	MARB	YG	CW	REA	FAT
13	-2.9	66	105	0.24	2.09	25	13	12	10	15	0.33	0.07	28	0.34	0.04
41%	31%	29%	33%	40%	96%	60%	94%	35%	9%	56%	72%	51%	32%	13%	87%

Super balanced Blueprint son out of a really nice Roughrider daughter. This bull's granddam never misses and always does a nice job. Depend on this bull to leave lasting females.

lot 6

RREDS BLUEPRINT K276

Birth Date: 2/16/22 Category: 1A 100%
 BW: 82 WW: 623 #4680931

RREDS BLUE PRINT H001		GLACIER CHATEAU 744													
RREDS CATHY 6923		RREDS PRIMROSE F835													
		PIE CINCH 4126													
		D R CATHY 879													
ProS	HB	GM													
30	32	-3													
99%	88%	99%													
CED	BW	WW	YW	ADG	DMI	M	ME	HPG	CEM	ST	MARB	YG	CW	REA	FAT
14	-4.1	58	88	0.19	1.93	26	11	10	8	13	0.07	-0.10	20	0.44	0.00
38%	14%	61%	69%	75%	90%	44%	89%	76%	22%	77%	99%	3%	64%	6%	14%

Dead shot calving ease bull out of a cow that always breeds on time. Granddam is a 2009 model that has really done an excellent job in our program.

lot 7

RREDS BLUEPRINT K209

Birth Date: 1/15/22 Category: 1B 87.5% AR 12.5% XX
 BW: 57 WW: 636 #4681093

RREDS BLUE PRINT H001		GLACIER CHATEAU 744													
RREDS CATHY H024		RREDS PRIMROSE F835													
		STRA RELENTLESS													
		RREDS CATHY F871													
ProS	HB	GM													
121	79	42													
12%	10%	42%													
CED	BW	WW	YW	ADG	DMI	M	ME	HPG	CEM	ST	MARB	YG	CW	REA	FAT
16	-6.7	56	85	0.18	1.57	31	1	11	11	18	0.55	-0.05	21	0.50	0.02
11%	1%	67%	75%	80%	60%	10%	40%	52%	4%	20%	22%	7%	60%	4%	62%

This Blueprint was our lightest birth weight calf of this crop. His dam is a good, young Relentless daughter. The Relentless daughters are shaping up to be nice females. Maybe not the highest performance bull in the sale but you will keep every daughter.

lot 8 RREDS BLUEPRINT 28904

Birth Date: 3/29/22 Category: 1A 100%
 BW: 79 WW: 650 #4692055

RREDS BLUE PRINT H001

GLACIER CHATEAU 744
 RREDS PRIMROSE F835
 PIE THE COWBOY KIND 343
 BASIN PRIMROSE 4167

ProS	HB	GM														
86	46	40														
61%	67%	45%														
CED	BW	WW	YW	ADG	DMI	M	ME	HPG	CEM	ST	MARB	YG	CW	REA	FAT	
13	-2.4	55	93	0.24	1.70	24	12	10	9	16	0.39	0.03	26	0.32	0.03	
46%	39%	70%	60%	45%	73%	64%	93%	73%	21%	47%	55%	31%	40%	15%	67%	

A well-balanced heifer bull. This bull's granddam has 38 daughters. She was an 04 model who passed on last fall. In her lifetime, she recorded 10 birthweight and weaning weight records before becoming one of our best donors.

lot 9 RREDS BLUEPRINT 28902

Birth Date: 3/23/22 Category: 1A 100%
 BW: 73 WW: 668 #4692053

RREDS BLUE PRINT H001

GLACIER CHATEAU 744
 RREDS PRIMROSE F835
 PIE UP FRONT 508
 BASIN PRIMROSE 4167

ProS	HB	GM														
90	60	31														
54%	40%	65%														
CED	BW	WW	YW	ADG	DMI	M	ME	HPG	CEM	ST	MARB	YG	CW	REA	FAT	
14	-3.4	56	91	0.22	1.71	25	10	12	8	17	0.31	0.09	29	0.35	0.04	
30%	22%	67%	63%	56%	74%	60%	86%	34%	22%	32%	75%	62%	26%	12%	93%	

A full brother to Lot 8. Refer to his footnotes. They would make a good pair.

lot 10 RREDS BLUEPRINT 2219

Birth Date: 3/31/22 Category: 1A 100%
 BW: 68 WW: 837 #4688979

RREDS BLUE PRINT H001

GLACIER CHATEAU 744
 RREDS PRIMROSE F835
 PIE CINCH 4126
 MCCR KIMA 1099

ProS	HB	GM														
91	57	33														
53%	45%	60%														
CED	BW	WW	YW	ADG	DMI	M	ME	HPG	CEM	ST	MARB	YG	CW	REA	FAT	
12	-0.9	70	118	0.30	1.94	31	12	10	9	16	0.24	0.04	34	0.35	0.02	
54%	68%	17%	11%	8%	90%	9%	92%	71%	18%	36%	90%	34%	15%	12%	51%	

A younger ET calf out of Pathfinders dam. Don't sleep on this one. I think when this bull matures, he is going to do a ton of things right. I would use him on cows you want to power up a little.

lot 11 RREDS BLUEPRINT K2118

Birth Date: 3/4/22 Category: 1A 100%
 BW: 81 WW: 692 #4686411

RREDS BLUE PRINT H001

GLACIER CHATEAU 744
 RREDS PRIMROSE F835
 K C F BENNETT ABSOLUTE
 BROWN MS REDEMPTION A7018

ProS	HB	GM														
98	47	51														
41%	65%	25%														
CED	BW	WW	YW	ADG	DMI	M	ME	HPG	CEM	ST	MARB	YG	CW	REA	FAT	
14	-2.9	75	124	0.30	1.84	26	17	13	9	14	0.44	0.07	38	0.47	0.04	
35%	30%	7%	6%	8%	84%	48%	99%	19%	17%	63%	43%	53%	7%	5%	88%	

A really nice, well-balanced Blueprint son. He's dead shot calving ease with an outcross pedigree.





RED U2 TOWNSHIP 17G

C **RED U2 TOWNSHIP 17G**
 Birth Date: 1/3/19 Category: 1A 100%
 BW: 74 WW: 851 YW: 1373 #4265551

sire **RED MRLA RESOURCE 137E** | MRLA RELOAD 56C
 | MRLA MISS 4422B
U2 BEAUTY 113Z | RED U-2 MAMA'S BOY 167X
 | RED U-2 BEAUTY 48X

ProS	HB	GM													
47	28	19													
92%	85%	78%													
CED	BW	WW	YW	ADG	DMI	M	ME	HPG	CEM	ST	MARB	YG	CW	REA	FAT
5	1.8	67	105	0.24	1.62	27	1	13	3	12	0.26	0.12	25	0.03	0.02
98%	94%	34%	40%	48%	61%	34%	33%	31%	95%	81%	79%	71%	45%	66%	60%



Lot 12



Lot 12 as a calf this summer

lot **12** **RREDS TOWNSHIP K239**
 Birth Date: 1/27/22 Category: 1A 100%
 BW: 96 WW: 696 #4681013

RED U2 TOWNSHIP 17G | RED MRLA RESOURCE 137E
 | U2 BEAUTY 113Z
RREDS ENHANTRESS G955 | PELTON WIDELoad 78B
 | RREDS ENHANTRESS 521C

ProS	HB	GM													
68	45	23													
86%	69%	79%													
CED	BW	WW	YW	ADG	DMI	M	ME	HPG	CEM	ST	MARB	YG	CW	REA	FAT
6	0.8	63	101	0.24	1.65	24	-1	12	3	15	0.52	0.18	11	-0.16	0.05
99%	91%	41%	41%	42%	69%	64%	27%	39%	97%	57%	27%	95%	89%	96%	95%

One of my favorite bulls in the sale. His dam raised our high seller last year and we think she has potential. If you are looking for a bull that will add some serious muscle and thickness without adding mature size, he is the calf for you.



Lot 12 with his dam



Lot 13

lot **13**

RREDS TOWNSHIP K242

Birth Date: 1/27/22 Category: 1A 100%
 BW: 77 WW: 723 #4680953

RED U2 TOWNSHIP 17G													RED MRLA RESOURCE 137E			
RREDS ENHANTRESS E771													U2 BEAUTY 113Z			
ProS HB GM													PIE UP FRONT 508			
67 39 27													RREDS ENHANTRESS 521C			
87% 78% 72%																
CED	BW	WW	YW	ADG	DMI	M	ME	HPG	CEM	ST	MARB	YG	CW	REA	FAT	
8	0.0	58	85	0.17	1.50	23	-3	14	4	13	0.47	0.24	28	0.02	0.06	
94%	83%	60%	75%	85%	54%	70%	22%	10%	96%	79%	36%	99%	33%	74%	99%	

Another really attractive Township son, his Upfront dam and that line have done a really nice job for us. If you want to add weight but not mature size, here is another one. Over 800 pounds actual weaning and his mother is a legit 1300-pound cow with a 309-day calving interval.

lot **14**

RREDS MR TOWNSHIP 209

Birth Date: 1/28/22 Category: 1A 100%
 BW: 84 WW: 700 #4642753

RED U2 TOWNSHIP 17G													RED MRLA RESOURCE 137E			
MR GILDA 018													U2 BEAUTY 113Z			
ProS HB GM													RREDS OCEAN FRONT PROPERTY			
36 35 2													MR GILDA 6142			
99% 85% 98%																
CED	BW	WW	YW	ADG	DMI	M	ME	HPG	CEM	ST	MARB	YG	CW	REA	FAT	
6	1.8	69	104	0.22	1.71	23	3	13	3	13	0.19	0.11	21	0.08	0.03	
99%	97%	19%	34%	58%	74%	70%	48%	27%	97%	74%	95%	73%	61%	61%	79%	

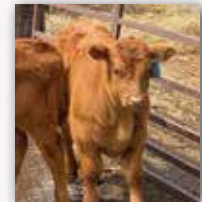
Really well-balanced cow maker. We have these Township daughters wet now and we really like them. This calf will be really strong on the female side.

lot **15**

RREDS TOWNSHIP K2135

Birth Date: 3/8/22 Category: 1A 100%
 BW: 80 WW: 685 #4686371

RED U2 TOWNSHIP 17G													RED MRLA RESOURCE 137E			
MLK CRK LAKOTA 095													U2 BEAUTY 113Z			
ProS HB GM													BECKTON EPIC R397 K			
76 50 26													MLK CRK LAKOTA 173			
77% 60% 75%																
CED	BW	WW	YW	ADG	DMI	M	ME	HPG	CEM	ST	MARB	YG	CW	REA	FAT	
9	-0.7	58	103	0.28	1.46	27	4	13	5	15	0.23	0.08	17	-0.01	0.02	
92%	72%	60%	37%	15%	49%	35%	55%	20%	90%	49%	91%	60%	76%	81%	51%	



Lot 15 as a calf

A younger ET calf out of an old Epic daughter that does a really nice job. This calf will improve feet and structural integrity along with lasting, balanced females. Dam is a 2010 model and granddam had 12 nursing ratios.

lot **16**

RREDS TOWNSHIP K2122

Birth Date: 3/5/22 Category: 1A 100%
 BW: 86 WW: 703 #4686355

RED U2 TOWNSHIP 17G													RED MRLA RESOURCE 137E			
STRA PRIMROSE 530													U2 BEAUTY 113Z			
ProS HB GM													BIEBER HARD DRIVE Y120			
87 30 57													STRA PRIMROSE 395			
59% 90% 16%																
CED	BW	WW	YW	ADG	DMI	M	ME	HPG	CEM	ST	MARB	YG	CW	REA	FAT	
6	1.5	72	109	0.23	1.63	28	7	12	3	13	0.59	-0.05	36	0.42	-0.01	
99%	95%	12%	25%	50%	67%	28%	75%	36%	97%	72%	17%	7%	10%	7%	5%	

A Township out of Blueprints granddam. Everything we have used on this cow has worked pretty well and this calf is no exception. He is balanced really well and you can go a lot of ways with him.

lot **17**

RREDS TOWNSHIP K2128

Birth Date: 3/7/22 Category: 1A 100%
 BW: 78 WW: 668 #4686361

RED U2 TOWNSHIP 17G													RED MRLA RESOURCE 137E			
STRA PRIMROSE 530													U2 BEAUTY 113Z			
ProS HB GM													BIEBER HARD DRIVE Y120			
89 58 31													STRA PRIMROSE 395			
57% 44% 65%																
CED	BW	WW	YW	ADG	DMI	M	ME	HPG	CEM	ST	MARB	YG	CW	REA	FAT	
9	-0.6	73	109	0.22	1.63	28	7	12	5	17	0.32	-0.05	32	0.41	0.00	
93%	74%	11%	26%	54%	67%	28%	75%	36%	86%	31%	73%	8%	20%	8%	10%	

A full sibling to Lot 16 and I would run them together.

lot 18 RREDS TOWNSHIP K2204

Birth Date: 4/11/22 Category: 1B 98.4% AR%
 BW: 96 WW: 733 #4686407

RED U2 TOWNSHIP 17G

RED MRLA RESOURCE 137E
 U2 BEAUTY 113Z
 5L NORSEMAN KING 2291
 BD3P DURHEIM 759

ProS	HB	GM														
111	71	39														
22%	19%	46%														
CED	BW	WW	YW	ADG	DMI	M	ME	HPG	CEM	ST	MARB	YG	CW	REA	FAT	
8	1.7	69	114	0.28	1.60	24	-4	14	5	16	0.30	0.01	30	0.31	0.01	
96%	96%	20%	16%	14%	63%	62%	18%	10%	91%	38%	79%	24%	25%	17%	31%	

This calf's mother is an eleven-year-old Norseman King and I have always appreciated those females for production. If you're into making lasting replacement females, this bull will do it.

lot 19 RREDS TOWNSHIP K2198

Birth Date: 4/10/22 Category: 1B 98.4% AR%
 BW: 96 WW: 734 #4686403

RED U2 TOWNSHIP 17G

RED MRLA RESOURCE 137E
 U2 BEAUTY 113Z
 5L NORSEMAN KING 2291
 BD3P DURHEIM 759

ProS	HB	GM														
85	65	20														
62%	29%	84%														
CED	BW	WW	YW	ADG	DMI	M	ME	HPG	CEM	ST	MARB	YG	CW	REA	FAT	
8	1.3	60	105	0.28	1.60	24	-4	14	5	16	0.24	0.08	14	0.03	0.03	
96%	94%	51%	33%	16%	63%	62%	18%	10%	91%	45%	90%	60%	82%	72%	69%	

A full sibling to Lot 18.



lot 20 RREDS TOWNSHIP K215

Birth Date: 1/17/22 Category: 1A 100%
 BW: 78 WW: 624 #4681083

RED U2 TOWNSHIP 17G

RED MRLA RESOURCE 137E
 U2 BEAUTY 113Z
 ELLINGSON ROUGHRIDER 4202
 RREDS PRIMROSE E750

ProS	HB	GM														
37	21	16														
99%	96%	89%														
CED	BW	WW	YW	ADG	DMI	M	ME	HPG	CEM	ST	MARB	YG	CW	REA	FAT	
6	1.7	66	106	0.25	1.76	21	6	14	3	12	0.22	0.07	24	0.24	0.03	
99%	96%	29%	30%	33%	78%	85%	65%	11%	99%	86%	92%	51%	48%	27%	81%	

A total outcross bull to the entire breed. The Primrose daughters have always been really productive. This calf should do a nice job on a set of females you need to tone down a bit.

lot 21 RREDS TOWNSHIP K205

Birth Date: 1/13/22 Category: 2 100%
 BW: 79 WW: #4681097

RED U2 TOWNSHIP 17G

RED MRLA RESOURCE 137E
 U2 BEAUTY 113Z
 RREDS SENECA 731C
 RREDS KIMA F833

ProS	HB	GM														
64	53	11														
90%	54%	94%														
CED	BW	WW	YW	ADG	DMI	M	ME	HPG	CEM	ST	MARB	YG	CW	REA	FAT	
9	-0.8	66	105	0.24	1.67	22	2	12	5	15	0.18	0.14	25	0.12	0.04	
90%	70%	29%	34%	41%	71%	80%	41%	32%	83%	55%	96%	86%	41%	52%	92%	

A calving Township bull out of a good, young Seneca daughter. A cow maker pedigree.

lot 22 RREDS TOWNSHIP 2346

Birth Date: 3/19/22 Category: 1A 100%
 BW: 86 WW: 789 #4688977

RED U2 TOWNSHIP 17G

RED MRLA RESOURCE 137E
 U2 BEAUTY 113Z
 LARSON SUN KING 016
 MLK CRK LANA 311

ProS	HB	GM														
83	57	26														
66%	45%	75%														
CED	BW	WW	YW	ADG	DMI	M	ME	HPG	CEM	ST	MARB	YG	CW	REA	FAT	
8	0.6	65	103	0.24	1.61	30	3	13	5	16	0.32	0.03	22	-0.04	-0.01	
96%	89%	34%	37%	42%	65%	16%	50%	16%	91%	42%	73%	30%	57%	86%	3%	

Don't sleep on this young Township – he expresses great character and shape. His dam and granddam are some of our true foundation cows. Granddam had 12 natural calves with a 368-day calving interval.

lot 23 RREDS TOWNSHIP 2163

Birth Date: 3/24/22 Category: 1A 100%
 BW: 71 WW: 689 #4688983

RED U2 TOWNSHIP 17G

RED MRLA RESOURCE 137E
 U2 BEAUTY 113Z
 LARSON SUN KING 016
 MLK CRK LANA 311

ProS	HB	GM
60	40	20
92%	78%	84%

RREDS LANA 306A

CED	BW	WW	YW	ADG	DMI	M	ME	HPG	CEM	ST	MARB	YG	CW	REA	FAT
13	-2.7	49	78	0.18	1.61	30	3	13	7	12	0.29	0.09	22	0.06	0.02
43%	34%	86%	85%	81%	65%	16%	50%	16%	41%	81%	80%	62%	57%	66%	55%

This bull is a full sibling to Lot 22 and both possess the genetic ability to make daughters that last and sons that perform.

lot 24 RREDS MR TOWNSHIP 231

Birth Date: 3/8/22 Category: 1A 100%
 BW: 84 WW: 737 #4642715

RED U2 TOWNSHIP 17G

RED MRLA RESOURCE 137E
 U2 BEAUTY 113Z
 PIE CINCH 4126
 AHF REBELLA L145

ProS	HB	GM
43	27	16
98%	92%	90%

MR REBELLA 7039

CED	BW	WW	YW	ADG	DMI	M	ME	HPG	CEM	ST	MARB	YG	CW	REA	FAT
9	0.9	60	93	0.21	1.37	29	-1	12	4	11	0.19	0.19	29	-0.13	0.03
90%	92%	51%	59%	66%	41%	23%	28%	37%	92%	89%	95%	96%	29%	95%	69%

A balanced Township son out of a no-miss Cinch daughter. She has a 367-day calving interval on her first four calves.

lot 25 RREDS MR TOWNSHIP 201

Birth Date: 1/20/22 Category: 1A 100%
 BW: 71 WW: 752 #4642763

RED U2 TOWNSHIP 17G

RED MRLA RESOURCE 137E
 U2 BEAUTY 113Z
 BIBBER LET'S ROLL B563
 MCCR KINSEY 7085

ProS	HB	GM
98	61	37
42%	38%	52%

MR KINSEY 011

CED	BW	WW	YW	ADG	DMI	M	ME	HPG	CEM	ST	MARB	YG	CW	REA	FAT
11	-1.4	69	108	0.24	1.89	27	2	13	6	15	0.35	0.05	38	0.30	0.01
73%	59%	21%	27%	38%	88%	39%	44%	19%	68%	49%	65%	44%	8%	18%	38%

The Township x Let's Roll pedigree in this calf should produce elite production cows. A cow maker pedigree loaded with predictability

lot 26 RREDS MR TOWNSHIP 224

Birth Date: 2/21/22 Category: 1A 100%
 BW: 87 WW: 802 #4642733

RED U2 TOWNSHIP 17G

RED MRLA RESOURCE 137E
 U2 BEAUTY 113Z
 RREDS PIONEER 6904
 MR GILDA 6142

ProS	HB	GM
75	37	37
78%	81%	51%

MR GILDA 8009

CED	BW	WW	YW	ADG	DMI	M	ME	HPG	CEM	ST	MARB	YG	CW	REA	FAT
9	-0.4	65	108	0.27	1.60	28	2	13	5	12	0.44	0.17	24	0.07	0.05
90%	77%	33%	27%	22%	63%	27%	44%	21%	86%	82%	43%	93%	46%	63%	96%

Number one performance bull in his contemporary. Lot 26's dam is a Pioneer daughter and those cows are proven to be very productive.

lot 27 RREDS MR TOWNSHIP 237

Birth Date: 3/16/22 Category: 1A 100%
 BW: 102 WW: 789 #4642721

RED U2 TOWNSHIP 17G

RED MRLA RESOURCE 137E
 U2 BEAUTY 113Z
 RREDS SENECA 731C
 MCCR MISS S603

ProS	HB	GM
56	34	22
95%	85%	82%

MR ONORA 8025

CED	BW	WW	YW	ADG	DMI	M	ME	HPG	CEM	ST	MARB	YG	CW	REA	FAT
4	5.4	83	125	0.26	1.81	25	3	12	2	13	0.27	0.11	37	0.16	0.02
99%	99%	1%	6%	27%	82%	54%	49%	29%	99%	73%	84%	77%	9%	43%	55%

Lots of performance in this Township calf. If you need to add a little pop to your cow herd, consider this guy.

lot 28 RREDS MR TOWNSHIP 211

Birth Date: 1/31/22 Category: 1A 100%
 BW: 86 WW: 728 #4642761

RED U2 TOWNSHIP 17G

RED MRLA RESOURCE 137E
 U2 BEAUTY 113Z
 RREDS OCEAN FRONT PROPERTY
 MR ERELITE 7120

ProS	HB	GM
72	37	35
82%	82%	55%

MR ERELITE 017

CED	BW	WW	YW	ADG	DMI	M	ME	HPG	CEM	ST	MARB	YG	CW	REA	FAT
7	0.9	69	108	0.24	1.62	24	3	13	3	13	0.39	0.08	30	0.29	0.03
97%	92%	19%	26%	38%	66%	67%	50%	18%	97%	74%	55%	58%	25%	19%	82%

Another performance breed Township son. There is performance in this bull's pedigree, and he would work nice on a set of cows you want to power up a little.



S A V Renovation 6822,
sire of **RREDS Renovation H0102**

D
sire

RREDS RENOVATION H0102

Birth Date: 3/16/20 Category: 2 100%
 BW: 86 WW: 448 YW: 1031 #4352951

S A V RENOVATION 6822													S A V RENOWN 3439		
BASIN PRIMROSE 4167													S A V MADAME PRIDE 0151		
25% 67% 11%													BASIN EXT H695		
22% 23% 48% 34% 21% 46% 96% 79% 26% 50% 60% 16% 99% 11% 58% 99%													BASIN PRIMROSE 879L		



Lot 29



MGS to Lot 29

lot
29

RREDS RENOVATION K248

Birth Date: 1/30/22 Category: 1A 100%
 BW: 74 WW: 772 #4681067

RREDS RENOVATION H0102													S A V RENOVATION 6822		
RREDS TILLY H0125													BASIN PRIMROSE 4167		
57% 91% 13%													LACY PAYLOAD 1120 023C		
78% 53% 19% 16% 15% 47% 38% 80% 42% 92% 77% 30% 62% 11% 15% 78%													RREDS TILLY 527C		

A really unique heifer bull. We love the type and kind in this calf and he offers a fresh pedigree that can be used virtually on any pedigree in the Red Angus breed. The Renovation line is proven to be cow makers. Lot 29's maternal grandsire is 8 years old and still breeding at our place. He should add flushing ability, improve udders, and won't take a back seat to the performance bulls. We will sample this bull in our program.

lot
30

RREDS RENOVATION K280

Birth Date: 2/17/22 Category: 1A 100%
 BW: 59 WW: 681 #4681061

RREDS RENOVATION H0102													S A V RENOVATION 6822		
RREDS TILLY H0100													BASIN PRIMROSE 4167		
13% 70% 3%													LACY PAYLOAD 1120 023C		
34% 25% 42% 27% 14% 38% 58% 74% 40% 59% 60% 4% 97% 18% 52% 98%													RREDS TILLY 412B		

One of the lowest birth weights in the sale and has the same pedigree as Lot 29. I would use him on virgin heifers and the females you get should be keepers.

lot
31

RREDS RENOVATION K2140

Birth Date: 3/8/22 Category: 1A 100%
 BW: 69 WW: 662 #4681063

RREDS RENOVATION H0102													S A V RENOVATION 6822		
RREDS LANA H090													BASIN PRIMROSE 4167		
35% 39% 42%													RREDS SENECA F866		
24% 23% 65% 58% 49% 37% 94% 47% 25% 29% 49% 35% 98% 43% 73% 99%													RREDS LANA 525C		

Highly maternal pedigree. The Lana cows are some of our most moderate and productive females. Safe for heifers.



RREDS PATHFINDER F811

E RREDS PATHFINDER F811
sire Birth Date: 2/14/18 Category: 1A 100%
 BW: 83 WW: 838 YW: 1342 #3952885

RREDS SENECA 731C
 RREDS KIMA D607

BIEBER ROLLIN DEEP Y118
 RREDS ASTER 309A
 PIE CINCH 4126
 MCCR KIMA 1099

ProS	HB	GM													
104	80	24													
31%	13%	69%													
CED	BW	WW	YW	ADG	DMI	M	ME	HPG	CEM	ST	MARB	YG	CW	REA	FAT
12	-0.7	75	130	0.35	2.03	28	16	10	9	21	0.07	0.16	42	0.37	0.06
57%	68%	14%	7%	4%	89%	28%	95%	77%	21%	4%	97%	85%	9%	16%	95%



Lot 32



Lot 32 this summer

lot **32** **RREDS PATHFINDER K254**
 Birth Date: 2/4/22 Category: 1A 100%
 BW: 80 WW: 738 #4680999

RREDS PATHFINDER F811
 RREDS ANASCO F820

RREDS SENECA 731C
 RREDS KIMA D607
 RREDS PIONEER 6904
 KLEIN ANASCO 310A

ProS	HB	GM													
98	86	12													
41%	6%	93%													
CED	BW	WW	YW	ADG	DMI	M	ME	HPG	CEM	ST	MARB	YG	CW	REA	FAT
17	-2.7	66	104	0.23	1.59	27	7	12	11	19	0.25	0.17	22	0.06	0.05
8%	34%	29%	35%	45%	62%	33%	75%	36%	3%	8%	88%	94%	57%	66%	98%

For seventeen CED, you could make the argument that this calf is as universal as any. He is balanced, has great type and kind, loose hided, and gentle. He is affectionately known as "Junior" because he is a carbon copy of his sire.



Lot 33

lot **33** **RREDS MR PATHFINDER 225**
 Birth Date: 2/21/22 Category: 1A 100%
 BW: 75 WW: 795 #4642735

RREDS PATHFINDER F811
 MR JUANA 9003

RREDS SENECA 731C
 RREDS KIMA D607
 MCCR NEBULA 6024
 MR JUANA 7107

ProS	HB	GM													
105	74	31													
30%	16%	64%													
CED	BW	WW	YW	ADG	DMI	M	ME	HPG	CEM	ST	MARB	YG	CW	REA	FAT
12	-1.6	74	123	0.31	1.77	29	11	12	8	19	0.42	0.15	21	0.02	0.04
57%	55%	9%	7%	7%	79%	19%	90%	40%	39%	10%	48%	89%	60%	74%	90%

This calf has as much jam as any that is in the offering. He is masculine and super heavy muscled. If you have a set of mature cows that need a little more performance and shape, this is the calf.

lot **34**

RREDS MR PATHFINDER 221

Birth Date: 2/20/22 Category: 1A 100%
 BW: 97 WW: 791 #4642697

RREDS PATHFINDER F811

RREDS SENECA 731C
 RREDS KIMA D607
 ANDRAS NEW DIRECTION R240
 GNRA MISS DIRECTION 422

ProS	HB	GM														
90	71	19	MR ERELITE 6036													
54%	20%	86%														
CED	BW	WW	YW	ADG	DMI	M	ME	HPG	CEM	ST	MARB	YG	CW	REA	FAT	
11	1.0	76	125	0.31	1.91	26	10	13	7	18	0.08	0.10	38	0.32	0.03	
68%	92%	7%	5%	5%	89%	42%	87%	24%	44%	19%	99%	67%	8%	15%	78%	

Big time performance Pathfinder son. He will be the largest-framed bull in the offering. If you are after size and stretch, consider this calf.

lot **35**

RREDS MR PATHFINDER 203

Birth Date: 1/22/22 Category: 1A 100%
 BW: 93 WW: 691 #4642711

RREDS PATHFINDER F811

RREDS SENECA 731C
 RREDS KIMA D607
 BIBER RREDS TAKEOUT 305A
 GNRA MISS BLACKBERRY 493

ProS	HB	GM														
113	71	41	MR COPPERQUEEN 7111													
20%	20%	42%														
CED	BW	WW	YW	ADG	DMI	M	ME	HPG	CEM	ST	MARB	YG	CW	REA	FAT	
9	2.3	83	137	0.34	1.89	24	13	13	6	18	0.37	0.07	32	0.22	0.02	
93%	98%	2%	1%	2%	87%	69%	94%	22%	67%	13%	61%	53%	18%	30%	47%	

A well-balanced cow bull that is bred right down the pipe. The steers will be competitive and the daughters will last.





U2Q PRESIDENT 64H

F U2Q PRESIDENT 64H

Birth Date: 2/24/20 Category: 0 100%
 BW: WW: YW: #4637847

sire

S A V PRESIDENT 6847

COLEMAN CHARLO 0256
 S A V BLACKCAP MAY 4136
 RED BAR-E-L APPROVAL 4L
 RED U-2 ANEXA 5F

ProS	HB	GM
113	67	46
22%	29%	33%

RED U-2 ANEXA 333N

CED	BW	WW	YW	ADG	DMI	M	ME	HPG	CEM	ST	MARB	YG	CW	REA	FAT
11	1.6	73	111	0.23	0.00	19	0	0	4	16	0.09	-0.02	38	0.48	0.01
66%	93%	17%	29%	50%	0%	89%	0%	0%	89%	35%	96%	17%	14%	9%	26%

lot 36

RREDS PRESIDENT K220

Birth Date: 1/19/22 Category: 1B 99.7% AR%
 BW: 84 WW: 774 #4680945

U2Q PRESIDENT 64H

S A V PRESIDENT 6847
 RED U-2 ANEXA 333N
 PIE UP FRONT 508
 RREDS LEAH 413B

ProS	HB	GM
136	74	61
4%	16%	11%

RREDS LEAH E765

CED	BW	WW	YW	ADG	DMI	M	ME	HPG	CEM	ST	MARB	YG	CW	REA	FAT
13	-0.6	66	99	0.20	0.65	23	-2	8	6	16	0.33	0.10	51	0.40	0.02
39%	74%	29%	47%	68%	5%	71%	24%	96%	67%	38%	70%	71%	1%	8%	62%

We really like these President calves. Lot 36 is no exception. His Upfront dam is proving to be a really nice cow. This bull has a little extra frame and yet still possesses excellent maternal ability. If you want to add a little more size without sacrificing maternal ability, consider Lot 36.

lot 37

RREDS PRESIDENT 26104

Birth Date: 3/25/22 Category: 1A 100%
 BW: 91 WW: 756 #4692051

U2Q PRESIDENT 64H

S A V PRESIDENT 6847
 RED U-2 ANEXA 333N
 ROUSE EPITOME A33
 STRA YODDA 306

ProS	HB	GM
111	68	43
23%	25%	39%

STRA YODDA 6104

CED	BW	WW	YW	ADG	DMI	M	ME	HPG	CEM	ST	MARB	YG	CW	REA	FAT
11	0.6	71	111	0.25	0.79	23	4	6	6	17	0.25	0.06	33	0.26	0.02
73%	89%	15%	21%	32%	8%	74%	52%	98%	79%	28%	88%	50%	18%	24%	55%

An outcross bull to most of our herd. Use this bull where you are looking to add some performance and frame.





TAC DRIFTER H10

G TAC DRIFTER H10

Birth Date: 2/19/20 Category: 1A 100%
 BW: 65 WW: 635 YW: 1323 #4392039

sire

BASIN HOBO 0545

BASIN HOBO 79E
 BASIN ERICA 330E
 TAC SECURITY D56
 3SCC VERNA B47

ProS	HB	GM														
152	99	53														
3%	3%	23%														
CED	BW	WW	YW	ADG	DMI	M	ME	HPG	CEM	ST	MARB	YG	CW	REA	FAT	
20	-4.9	68	102	0.21	1.75	28	7	10	11	22	0.70	0.22	41	0.28	0.07	
2%	9%	29%	46%	67%	72%	30%	68%	74%	5%	1%	11%	95%	10%	25%	99%	



Lot 38

lot 38 RREDS DRIFTER K243

Birth Date: 1/28/22 Category: 1A 100%
 BW: 84 WW: 774 #4680929

TAC DRIFTER H10

BASIN HOBO 0545
 TAC MS VERNA F66 ET
 PIE CINCH 4126
 D R CATHY 879

ProS	HB	GM														
128	91	37														
8%	3%	52%														
CED	BW	WW	YW	ADG	DMI	M	ME	HPG	CEM	ST	MARB	YG	CW	REA	FAT	
19	-3.1	73	104	0.20	1.68	28	9	10	11	21	0.51	0.13	37	0.33	0.05	
2%	26%	11%	34%	72%	72%	24%	83%	70%	2%	2%	29%	84%	9%	14%	95%	

This lead off Drifter is out of one of my very favorite Cinch daughters. Lot 38 had an actual weaning weight of 866 pounds. He is dense, thick, and as long as a well rope. Use him to add a little more size without giving up anything on the production side.

lot 39 RREDS DRIFTER 20781

Birth Date: 2/6/22 Category: 1A 100%
 BW: 62 WW: 693 #4692049

TAC DRIFTER H10

BASIN HOBO 0545
 TAC MS VERNA F66 ET
 RREDS OCEAN FRONT PROPERTY
 CBRDS PRIMROSE 7810

ProS	HB	GM														
127	85	42														
8%	6%	41%														
CED	BW	WW	YW	ADG	DMI	M	ME	HPG	CEM	ST	MARB	YG	CW	REA	FAT	
17	-4.1	68	104	0.22	1.59	24	6	11	9	20	0.50	0.16	35	0.32	0.06	
6%	14%	22%	35%	55%	62%	70%	65%	57%	13%	4%	30%	92%	12%	15%	99%	

Dead shot heifer bull out of the Primrose line. We think these Drifter cattle are going to make excellent females.

lot 40 RREDS DRIFTER K2106

Birth Date: 2/25/22 Category: 1A 100%
 BW: 67 WW: 695 #4681079

TAC DRIFTER H10

BASIN HOBO 0545
 TAC MS VERNA F66 ET
 RREDS SENECA 731C
 RREDS MS CONQUEST D608

ProS	HB	GM														
143	110	33														
2%	1%	60%														
CED	BW	WW	YW	ADG	DMI	M	ME	HPG	CEM	ST	MARB	YG	CW	REA	FAT	
20	-5.0	68	107	0.24	1.68	23	7	11	12	23	0.47	0.10	23	0.31	0.05	
1%	6%	22%	28%	38%	71%	72%	73%	63%	1%	1%	36%	69%	52%	17%	98%	

The Drifter x Seneca combination should make some really nice daughters. We have four generations of females in production out of this line and they have done a very good job.

lot **41** **RREDS DRIFTER K259**
 Birth Date: 2/6/22 Category: 1A 100%
 BW: 60 WW: 655 #4681117

TAC DRIFTER H10													BASIN HOBO 0545			
													TAC MS VERNA F66 ET			
RREDS LANA H0483													CONNEALY IMPRESSION			
													RREDS LANA 402B			
ProS	HB	GM														
132	74	58														
6%	16%	15%														
CED	BW	WW	YW	ADG	DMI	M	ME	HPG	CEM	ST	MARB	YG	CW	REA	FAT	
18	-2.7	70	103	0.21	1.70	24	7	11	11	17	0.73	0.02	35	0.47	0.03	
4%	34%	16%	36%	66%	73%	68%	74%	49%	4%	24%	6%	26%	12%	5%	67%	

Total outcross calving ease bull. This calf is moderate and thick and comes from a cow line that is one of the center pieces in our program.

lot **42** **RREDS DRIFTER K293**
 Birth Date: 2/19/22 Category: 1A 100%
 BW: 67 WW: 720 #4681069

TAC DRIFTER H10													BASIN HOBO 0545			
													TAC MS VERNA F66 ET			
RREDS DAISY H054													RED CROWFOOT OLE'S OSCAR			
													BCLR MISS DAISY D611			
ProS	HB	GM														
138	83	55														
4%	7%	19%														
CED	BW	WW	YW	ADG	DMI	M	ME	HPG	CEM	ST	MARB	YG	CW	REA	FAT	
18	-5.3	61	88	0.17	1.61	28	9	11	11	20	0.69	0.04	35	0.50	0.04	
3%	5%	48%	69%	85%	65%	28%	82%	65%	2%	5%	8%	38%	13%	4%	87%	

Heifer bull that got to 720 at weaning time. His dam is an old school Oscar daughter back to one of our very best Hard Drives. This calf should sire excellent females.



RREDS RENOVATION H037

H **RREDS RENOVATION H037**
 Birth Date: 2/14/20 Category: 2 100%
 BW: 76 WW: 738 YW: 1268 #4287859

sire

S A V RENOVATION 6822													S A V RENOWN 3439			
													S A V MADAME PRIDE 0151			
RREDS PRIMROSE F817													RREDS SENECA 731C			
													RREDS PRIMROSE 526C			
ProS	HB	GM														
91	52	38														
49%	53%	46%														
CED	BW	WW	YW	ADG	DMI	M	ME	HPG	CEM	ST	MARB	YG	CW	REA	FAT	
19	-3.7	73	117	0.27	2.09	18	12	15	9	14	0.59	0.29	33	0.05	0.08	
4%	20%	18%	19%	25%	91%	92%	88%	10%	19%	61%	21%	99%	23%	62%	99%	

lot **43** **RREDS MR RENOVATION 207**
 Birth Date: 1/26/22 Category: 1A 100%
 BW: 64 WW: 706 #4642767

RREDS RENOVATION H037													S A V RENOVATION 6822			
													RREDS PRIMROSE F817			
MR ERELITE 001													BIEBER FOREFRONT B281			
													MR ERELITE 8019			
ProS	HB	GM														
72	49	24														
82%	62%	79%														
CED	BW	WW	YW	ADG	DMI	M	ME	HPG	CEM	ST	MARB	YG	CW	REA	FAT	
17	-4.9	61	95	0.21	1.85	23	8	16	9	13	0.57	0.27	19	-0.24	0.06	
5%	7%	49%	55%	61%	85%	71%	79%	4%	10%	79%	19%	99%	69%	99%	99%	

The first son to sell out of H037. The top side of this pedigree is a Renovation x Seneca and he was one of my favorite bulls in the sale a couple of years ago. Lot 43 will work excellent on heifers while still siring performance and adds breed character.

lot **44** **RREDS MR RENOVATION 205**
 Birth Date: 1/25/22 Category: 1A 100%
 BW: 58 WW: 716 #4642777

RREDS RENOVATION H037													S A V RENOVATION 6822			
													RREDS PRIMROSE F817			
MR OPHELIA 006													BIEBER FOREFRONT B281			
													MR OPHELIA 8002			
ProS	HB	GM														
128	65	63														
8%	30%	10%														
CED	BW	WW	YW	ADG	DMI	M	ME	HPG	CEM	ST	MARB	YG	CW	REA	FAT	
20	-4.2	73	121	0.30	1.90	24	8	15	11	15	0.58	0.10	41	0.32	0.03	
1%	12%	11%	9%	8%	88%	69%	79%	5%	2%	60%	18%	67%	5%	15%	71%	

I would run 43 and 44 on heifers together. The two are very similar in type and kind and would be a very good pair.



RED BAR-E-L FIRST DOWN 161D

2 RED BAR-E-L FIRST DOWN 161D

Birth Date: 3/11/16 Category: 1A 100%
 BW: WW: 786 YW: #3769237

sire

ProS	HB	GM
103	84	19
32%	9%	77%

RED CROWFOOT 4ACES 2193Z

RED BAR-E-L GLORIA 87R

XO CROWFOOT 0102X
 RED CROWFOOT MISS STRTCH
 RED BAR-E-L APPROVAL 4L
 RED BAR-E-L FIRST LADY 95J

CE	D	BW	WW	YW	ADG	DMI	M	ME	HPG	CEM	ST	MARB	YG	CW	REA	FAT
10	-0.5	54	87	0.21	1.08	23	-9	12	5	19	0.25	0.04	11	0.01	0.02	
77%	71%	77%	73%	66%	18%	73%	8%	46%	85%	10%	80%	37%	85%	70%	44%	



lot
45

RREDS FIRST DOWN 227K

Birth Date: 2/13/22 Category: 1A 100%
 BW: 89 WW: 735 #4689799

ProS	HB	GM
69	64	5
85%	32%	97%

RED BAR-E-L FIRST DOWN 161D

RED MINBURN KARUBA 24C

RED CROWFOOT 4ACES 2193Z
 RED BAR-E-L GLORIA 87R
 RED TK TUSGAPRIDE 13X
 RED MINBURN KARUBA 303W

CE	D	BW	WW	YW	ADG	DMI	M	ME	HPG	CEM	ST	MARB	YG	CW	REA	FAT
9	2.7	56	88	0.20	0.54	24	-4	6	4	16	0.11	0.04	4	-0.06	0.02	
89%	99%	68%	70%	70%	3%	68%	17%	98%	93%	36%	99%	36%	97%	88%	46%	

I really like the type and kind in this First Down son. He has an excellent skull and crest and expresses an early growth curve. He should make very efficient daughters and steers that do awesome out on grass.





RED LWNBRG SLOWBURN 102H

SIRE **RED LWNBRG SLOWBURN 102H**

Birth Date: 1/30/20 Category: 0 100%
 BW: WW: YW: #4689627

RED U2 DOMINION | RED HOWE HESSTON 212C
 | RED U2 HIDEE HO 459D
RED U2 FAVORITE 275F | RED U-2 RENOWN 193C
 | RED KBJ FAVORITE 931B

ProS	HB	GM
120	65	55
16%	32%	21%

CED	BW	WW	YW	ADG	DMI	M	ME	HPG	CEM	ST	MARB	YG	CW	REA	FAT
9	2.1	73	114	0.26	0.00	27	0	0	5	16	0.24	-0.03	28	0.41	0.01
89%	95%	18%	23%	35%	0%	33%	0%	0%	86%	46%	82%	13%	35%	13%	29%



lot 46 **RREDS SLOWBURN 220K**

Birth Date: 2/11/22 Category: 1A 100%
 BW: 90 WW: 713 #4689803

RED LWNBRG SLOWBURN 102H | RED U2 DOMINION
 | RED U2 FAVORITE 275F
RED MINBURN OMEGA 2F | RED KBJ SKY JET 970D
 | RED MINBURN OMEGA 14A

ProS	HB	GM
118	77	42
15%	13%	42%

CED	BW	WW	YW	ADG	DMI	M	ME	HPG	CEM	ST	MARB	YG	CW	REA	FAT
10	0.5	52	81	0.18	0.00	24	0	0	6	18	0.14	0.01	26	0.22	0.00
82%	88%	80%	81%	81%	1%	65%	32%	98%	76%	17%	98%	23%	39%	30%	24%

Total outcross pedigree. This Slowburn calf is balanced and designed to make some awesome daughters.

lot 47 **RREDS SLOWBURN 201K**

Birth Date: 2/1/22 Category: 1A 100%
 BW: 79 WW: 772 #4689807

RED LWNBRG SLOWBURN 102H | RED U2 DOMINION
 | RED U2 FAVORITE 275F
RED MINBURN MARSLITE 188H | RED BIG SKY ADVANTAGE 705
 | RED MINBURN MARSLITE 34D

ProS	HB	GM
129	68	61
7%	24%	12%

CED	BW	WW	YW	ADG	DMI	M	ME	HPG	CEM	ST	MARB	YG	CW	REA	FAT
6	1.5	80	131	0.32	0.00	26	0	0	3	17	0.14	0.03	39	0.20	-0.01
99%	95%	3%	3%	4%	1%	49%	32%	98%	98%	28%	98%	30%	7%	34%	4%

Another really nice Slowburn calf that weighed 772 lbs. off of a two-year-old. Lots of mating flexibility with this calf.

lot 48 **RREDS SLOWBURN 219K**

Birth Date: 2/11/22 Category: 1A 100%
 BW: 83 WW: 663 #4689801

RED LWNBRG SLOWBURN 102H | RED U2 DOMINION
 | RED U2 FAVORITE 275F
RED MINBURN ZETA 137E | RED MOOSE CREEK DIXON 45B
 | RED KORAN ZETA 560W 781

ProS	HB	GM
50	63	-13
97%	34%	99%

CED	BW	WW	YW	ADG	DMI	M	ME	HPG	CEM	ST	MARB	YG	CW	REA	FAT
11	-0.1	41	60	0.11	0.00	23	0	0	6	16	-0.05	-0.11	-7	0.17	0.00
77%	81%	95%	97%	97%	1%	72%	32%	98%	70%	41%	99%	3%	99%	40%	24%

Great breed character in this Slowburn son. He is nice in his lines, sound, and balanced.



RREDS COMMON SENSE G933

K RREDS COMMON SENSE G933

Birth Date: 2/24/19 Category: 1A 100%
 BW: 89 WW: 794 YW: 1376 #4121384

sire

RREDS SENECA 731C

PIE REBELLA 554

BIEBER ROLLIN DEEP Y118
 RREDS ASTER 309A
 PIE CODE RED 9058
 RAISLAND REBELLA 314-606

ProS	HB	GM													
93	69	24													
47%	26%	70%													
CED	BW	WW	YW	ADG	DMI	M	ME	HPG	CEM	ST	MARB	YG	CW	REA	FAT
12	-2.5	75	124	0.31	2.13	24	14	13	7	18	0.26	0.16	34	0.22	0.05
61%	38%	14%	11%	12%	92%	66%	91%	29%	52%	18%	79%	86%	22%	32%	94%



Lot 49

lot 49 RREDS COMMON SENSE 2711

Birth Date: 3/28/22 Category: 1A 100%
 BW: 85 WW: 882 #4688973

RREDS COMMON SENSE G933

RED BRYLOR PRISCILLA 67W

RREDS SENECA 731C
 PIE REBELLA 554
 RED BRYLOR SDL RICHTER 212R
 RED BRYLOR PRISCILLA 304S

ProS	HB	GM													
84	67	18													
64%	27%	87%													
CED	BW	WW	YW	ADG	DMI	M	ME	HPG	CEM	ST	MARB	YG	CW	REA	FAT
6	0.6	69	115	0.29	1.86	24	7	12	5	19	0.20	0.11	24	0.12	0.03
98%	89%	21%	15%	11%	86%	66%	76%	31%	91%	10%	94%	74%	46%	52%	81%

Our only Common Sense son to sell this year and don't overlook him. This young ET calf exhibits an excellent type and pattern. He is balanced, good lined, and excellent structurally.





S A V ROY ROGERS 0863

2 S A V ROY ROGERS 0863

Birth Date: 12/29/19 Category: 0 100%

BW: WW: YW: #4645375

sire

S A V RENOVATION 6822

S A V RENOWN 3439
S A V MADAME PRIDE 0151

S A V BLACKCAP MAY 1808

S A V NET WORTH 4200
S A V MAY 2397

ProS	HB	GM
104	17	87
32%	92%	3%

CED	BW	WW	YW	ADG	DMI	M	ME	HPG	CEM	ST	MARB	YG	CW	REA	FAT
6	2.6	81	138	0.36	0.00	22	0	0	-1	12	0.37	0.41	58	0.14	0.10
97%	97%	6%	4%	3%	0%	78%	0%	0%	99%	82%	58%	99%	2%	45%	99%



Lot 50



Lot 50 this summer

lot 50

RREDS ROY ROGERS K218

Birth Date: 1/18/22 Category: 2 99.2% AR%

BW: 77 WW: 759 #4681007

S A V ROY ROGERS 0863

S A V RENOVATION 6822
S A V BLACKCAP MAY 1808

RREDA MISS NORSEMAN G9106

PIE CINCH 4126
BIEBER DURHEIM 265Z

ProS	HB	GM
92	45	46
51%	68%	32%

CED	BW	WW	YW	ADG	DMI	M	ME	HPG	CEM	ST	MARB	YG	CW	REA	FAT
13	-1.4	69	112	0.27	0.68	25	-3	5	5	13	0.34	0.16	26	0.15	0.05
46%	59%	21%	19%	20%	6%	60%	20%	98%	87%	76%	68%	92%	38%	46%	97%

This Roy Rogers son was one of our favorites all summer. He is out of a really nice Cinch daughter that we really like. Phenotypically he is one of the most impressive bulls in the offering.



Lot 51



Lot 51 this summer

lot 51

RREDS ROY ROGERS K295

Birth Date: 2/19/22 Category: 2 100%

BW: 104 WW: 799 #4680963

S A V ROY ROGERS 0863

S A V RENOVATION 6822
S A V BLACKCAP MAY 1808

RREDS RENEE F867

PIE CINCH 4126
OLC RENEE S188

ProS	HB	GM
79	14	64
73%	98%	9%

CED	BW	WW	YW	ADG	DMI	M	ME	HPG	CEM	ST	MARB	YG	CW	REA	FAT
7	1.6	69	117	0.30	0.74	23	-2	5	1	10	0.32	0.17	41	0.20	0.04
98%	96%	21%	13%	8%	7%	75%	24%	98%	99%	93%	73%	95%	4%	34%	90%

Love the Roy x Cinch combination here. This calf has as much character as any in the offering. Perfect skulled, excellent lined, and as well balanced as any.

lot **52**

RREDS ROY ROGERS K291

Birth Date: 2/19/22 Category: 2 100%
 BW: 98 WW: 810 #4681025

S A V ROY ROGERS 0863

S A V RENOVATION 6822
 S A V BLACKCAP MAY 1808
 PELTON WIDELOAD 78B
 RREDS KIMA D607

ProS	HB	GM
104	43	61
31%	72%	12%

RREDS KIMA G936

CED	BW	WW	YW	ADG	DMI	M	ME	HPG	CEM	ST	MARB	YG	CW	REA	FAT
9	0.1	71	121	0.31	0.81	26	2	5	3	15	0.39	0.24	37	0.13	0.06
90%	85%	14%	9%	6%	9%	46%	43%	98%	98%	57%	54%	99%	8%	49%	99%

This Roy's dam is a maternal sister to Pathfinder. He comes with a little extra frame but is still soft and dense.

lot **53**

RREDS ROY ROGERS K286

Birth Date: 2/18/22 Category: 2 100%
 BW: 87 WW: #4680947

S A V ROY ROGERS 0863

S A V RENOVATION 6822
 S A V BLACKCAP MAY 1808
 PIE UP FRONT 508
 RREDS KIMA 530C

ProS	HB	GM
99	49	50
39%	61%	26%

RREDS KIMA E723

CED	BW	WW	YW	ADG	DMI	M	ME	HPG	CEM	ST	MARB	YG	CW	REA	FAT
10	-0.1	66	108	0.26	0.57	20	-5	7	2	14	0.29	0.26	37	0.03	0.06
88%	81%	29%	27%	27%	4%	90%	17%	97%	99%	63%	80%	99%	9%	72%	99%

Great maternal pedigree. This calf is balanced and fits in a lot of places.

lot **54**

RREDS ROY ROGERS K279

Birth Date: 2/17/22 Category: 2 100%
 BW: 101 WW: 786 #4680983

S A V ROY ROGERS 0863

S A V RENOVATION 6822
 S A V BLACKCAP MAY 1808
 RREDS PIONEER 6904
 RREDS LANA 507C

ProS	HB	GM
100	20	79
38%	96%	2%

RREDS LANA F814

CED	BW	WW	YW	ADG	DMI	M	ME	HPG	CEM	ST	MARB	YG	CW	REA	FAT
6	1.3	70	122	0.33	0.62	26	2	7	0	12	0.51	0.22	38	0.02	0.04
99%	94%	17%	8%	3%	4%	44%	41%	98%	99%	84%	29%	98%	7%	74%	90%

Another excellent maternal pedigree. Don't worry about this bull's birth weight. He will leave you excellent daughters designed to last.

lot **55**

RREDS ROY ROGERS K229

Birth Date: 1/22/22 Category: 2 100%
 BW: 84 WW: 763 #4689061

S A V ROY ROGERS 0863

S A V RENOVATION 6822
 S A V BLACKCAP MAY 1808
 SILVEIRAS MISSION NEXUS 1378
 BASIN PRIMROSE 4167

ProS	HB	GM
126	40	86
9%	77%	1%

RREDS 8056

CED	BW	WW	YW	ADG	DMI	M	ME	HPG	CEM	ST	MARB	YG	CW	REA	FAT
10	0.3	64	114	0.31	0.65	21	3	6	4	14	0.44	0.27	53	0.23	0.06
84%	86%	37%	16%	5%	5%	88%	49%	98%	96%	69%	43%	99%	1%	29%	99%

A bigger framed Roy that was 850 lbs. at weaning time. If you background your calves, this would be an excellent choice.





**S A V Renovation 6822,
sire of RREDS Renovation H0102**

D
sire

RREDS RENOVATION H0102

Birth Date: 3/16/20 Category: 2 100%
 BW: 86 WW: 448 YW: 1031 #4352951

S A V RENOVATION 6822

S A V RENOWN 3439
 S A V MADAME PRIDE 0151
 BASIN EXT H695
 BASIN PRIMROSE 879L

ProS	HB	GM
110	44	66
25%	67%	11%

BASIN PRIMROSE 4167

CE	D	BW	WW	YW	ADG	DMI	M	ME	HPG	CEM	ST	MARB	YG	CW	REA	FAT
15	-3.5	62	108	0.28	1.45	17	9	13	7	14	0.63	0.32	40	0.07	0.09	
22%	23%	48%	34%	21%	46%	96%	79%	26%	50%	60%	16%	99%	11%	58%	99%	



lot
56

RREDS RENOVATION K2117

Birth Date: 3/4/22 Category: 1A 100%
 BW: 64 WW: 656 #4681077

RREDS RENOVATION H0102

S A V RENOVATION 6822
 BASIN PRIMROSE 4167
 ELLINGSON ROUGH RIDER 4202
 RREDS KIMA D607

ProS	HB	GM
85	39	46
63%	80%	32%

RREDS KIMA H051

CE	D	BW	WW	YW	ADG	DMI	M	ME	HPG	CEM	ST	MARB	YG	CW	REA	FAT
14	-1.3	69	123	0.33	1.74	20	12	13	8	13	0.37	0.31	38	0.01	0.08	
35%	60%	19%	7%	2%	76%	92%	92%	23%	29%	79%	61%	99%	7%	76%	99%	

Really interesting heifer bull here. His sire is going to make great females and his dam is a maternal sister to Pathfinder.





S A V RESOURCE 1441

M S A V RESOURCE 1441

Birth Date: 1/7/11 Category: 0 100%
 BW: WW: YW: #3320257
sire

RITO 707 OF IDEAL 3407 7075 | R R RITO 707
 IDEAL 3407 OF 1418 076
 S A V BLACKCAP MAY 4136 | S A V 8180 TRAVELER 004
 S A V MAY 2397

ProS	HB	GM	CE	BW	WW	YW	ADG	DMI	M	ME	HPG	CEM	ST	MARB	YG	CW	REA	FAT			
47	-14	62	92%	99%	14%	9	1.8	87	153	0.41	2.16	14	20	15	1	10	0.23	0.06	61	0.82	0.04
85%	94%	3%	1%	1%	93%	98%	99%	15%	99%	93%	83%	42%	1%	2%	86%						

lot 57 RREDS RESOURCE K2139

Birth Date: 3/8/22 Category: 2 100%
 BW: 96 WW: 678 #4686417

S A V RESOURCE 1441 | RITO 707 OF IDEAL 3407 7075
 S A V BLACKCAP MAY 4136
 BASIN TREND SETTER 6074
 BASIN PRIMROSE 2043

ProS	HB	GM	CE	BW	WW	YW	ADG	DMI	M	ME	HPG	CEM	ST	MARB	YG	CW	REA	FAT			
81	26	55	69%	93%	18%	11	0.0	70	114	0.28	1.56	23	10	14	5	12	0.49	0.06	35	0.40	0.03
70%	83%	17%	16%	18%	60%	73%	85%	10%	91%	86%	33%	48%	13%	8%	79%						

This will be one of the last opportunities to buy a calf off of OT43. She was a foundation cow for our program and just passed on this winter at the age of 16. She was an incredibly productive cow and has over 30 registered daughters. This calf will just get better with age.

lot 58 RREDS RESOURCE 2705

Birth Date: 3/29/22 Category: 2 100%
 BW: 80 WW: 878 #4688975

S A V RESOURCE 1441 | RITO 707 OF IDEAL 3407 7075
 S A V BLACKCAP MAY 4136
 BIBBER HARD DRIVE Y120
 RREDS BELLA 217Z

ProS	HB	GM	CE	BW	WW	YW	ADG	DMI	M	ME	HPG	CEM	ST	MARB	YG	CW	REA	FAT			
99	26	73	39%	93%	4%	11	1.4	82	133	0.32	1.90	20	14	13	3	13	0.49	0.01	59	0.83	0.03
77%	95%	2%	2%	4%	88%	92%	96%	17%	97%	73%	33%	21%	1%	1%	71%						

A really interesting young ET calf. Don't sleep on this young bull. He is bred for real world performance but shouldn't give anything up on the maternal side.



Kelly & Dawn Melius Family



RED U2 TOWNSHIP 17G

C **RED U2 TOWNSHIP 17G**
sire Birth Date: 1/3/19 Category: 1A 100%
 BW: 74 WW: 851 YW: 1373 #4265551

RED MRLA RESOURCE 137E | MRLA RELOAD 56C
 | MRLA MISS 4422B
U2 BEAUTY 113Z | RED U-2 MAMA'S BOY 167X
 | RED U-2 BEAUTY 48X

ProS	HB	GM													
47	28	19													
92%	85%	78%													
CED	BW	WW	YW	ADG	DMI	M	ME	HPG	CEM	ST	MARB	YG	CW	REA	FAT
5	1.8	67	105	0.24	1.62	27	1	13	3	12	0.26	0.12	25	0.03	0.02
98%	94%	34%	40%	48%	61%	34%	33%	31%	95%	81%	79%	71%	45%	66%	60%



lot 59 **RREDS MR TOWNSHIP 223**
 Birth Date: 2/19/22 Category: 2 100%
 BW: 77 WW: 709 #4642709

RED U2 TOWNSHIP 17G | RED MRLA RESOURCE 137E
 | U2 BEAUTY 113Z
MR HELGA 7044 | PIE CINCH 4126
 | MCCR HELGA 1069

ProS	HB	GM													
56	61	-5													
95%	38%	99%													
CED	BW	WW	YW	ADG	DMI	M	ME	HPG	CEM	ST	MARB	YG	CW	REA	FAT
12	-1.7	59	90	0.2	1.69	29	3	12	8	16	0.16	0.06	12	0.08	0.03
61%	53%	56%	65%	72%	73%	19%	48%	32%	39%	47%	97%	49%	86%	61%	74%

A really nice calving ease Township son that still got up and grew. This bull is quite moderate in stature so if you have a group of cows you want to tone down a little bit, consider Lot 59.





COLEMAN MARSHALL 7170

M COLEMAN MARSHALL 7170

Birth Date: 6/29/17 Category: 0 100%
 BW: WW: YW: #4645389

sire

S A V RESOURCE 1441

RITO 707 OF IDEAL 3407 7075
 S A V BLACKCAP MAY 4136
 BASIN RAINMAKER 654X
 KMK DONNA J311

ProS	HB	GM
113	34	79
22%	79%	5%

COLEMAN DONNA 197

CED	BW	WW	YW	ADG	DMI	M	ME	HPG	CEM	ST	MARB	YG	CW	REA	FAT
17	-1.4	79	135	0.35	0.00	19	0	0	7	9	0.14	0.00	49	0.72	0.03
11%	57%	8%	5%	3%	0%	91%	0%	0%	43%	94%	93%	21%	4%	3%	64%



lot **60** RREDS MARSHALL K231

Birth Date: 1/23/22 Category: 2 100%
 BW: 92 WW: 729 #4680913

COLEMAN MARSHALL 7170

S A V RESOURCE 1441
 COLEMAN DONNA 197
 BIEBER ACC ENCORE A101
 OLC RENEE S188

ProS	HB	GM
114	55	59
18%	49%	14%

RREDS RENEE 532C

CED	BW	WW	YW	ADG	DMI	M	ME	HPG	CEM	ST	MARB	YG	CW	REA	FAT
13	1.1	71	121	0.31	0.47	18	-4	6	7	13	0.28	0.03	28	0.38	0.03
46%	93%	15%	8%	5%	2%	97%	19%	98%	61%	76%	82%	32%	31%	10%	76%

One of my favorite black-red carriers this year. We used Marshall because when I saw him at Coleman's, he was one of the stoutest Angus bulls I have encountered in some time. You can take this bull any direction.



Lot 61

lot **61** RREDS COLEMAN MARSHALL K2132

Birth Date: 3/7/22 Category: 2 100%
 BW: 84 WW: 703 #4686365

COLEMAN MARSHALL 7170

S A V RESOURCE 1441
 COLEMAN DONNA 197
 BIEBER HARD DRIVE Y120
 STRA PRIMROSE 395

ProS	HB	GM
136	68	69
4%	25%	6%

STRA PRIMROSE 530

CED	BW	WW	YW	ADG	DMI	M	ME	HPG	CEM	ST	MARB	YG	CW	REA	FAT
15	-1.3	75	122	0.29	0.82	24	7	6	8	17	0.54	-0.06	27	0.56	0.02
19%	60%	7%	8%	11%	9%	70%	73%	98%	39%	31%	24%	6%	36%	2%	53%

A young Marshall calf out of Blueprints granddam. One of our favorites as a baby and the older he gets the more I like him. He is super attractive and balanced. Don't sleep on this calf.



S A V BLOODLINE 9578



S A V BLOODLINE 9578

Birth Date: 12/29/18 Category: 0 100%
 BW: WW: YW: #4649569

sire

S A V RAINFALL 6846

COLEMAN CHARLO 0256
 S A V BLACKCAP MAY 4136
 S A V 707 RITO 9969
 S A V EMBLYNETTE 7566

ProS	HB	GM
193	57	136
1%	45%	1%

S A V EMBLYNETTE 2369

CED	BW	WW	YW	ADG	DMI	M	ME	HPG	CEM	ST	MARB	YG	CW	REA	FAT
8	2.1	98	173	0.47	0.00	15	0	0	6	12	0.56	0.24	78	0.18	0.00
94%	95%	1%	1%	1%	0%	97%	0%	0%	65%	82%	24%	97%	1%	38%	24%



lot 62

RREDS BLOODLINE K247

Birth Date: 1/30/22 Category: 2 100%
 BW: 91 WW: 794 #4681049

S A V BLOODLINE 9578

S A V RAINFALL 6846
 S A V EMBLYNETTE 2369
 RREDS SENECA 731C
 BIEBER ADELLE 253W

ProS	HB	GM
121	28	93
12%	92%	1%

RREDS ADELLE G9012

CED	BW	WW	YW	ADG	DMI	M	ME	HPG	CEM	ST	MARB	YG	CW	REA	FAT
9	-0.9	70	120	0.31	0.88	16	1	7	6	9	0.83	0.34	45	-0.07	0.07
89%	68%	17%	9%	5%	11%	99%	36%	98%	68%	97%	2%	99%	2%	89%	99%

Our only Bloodline in the sale and he is a good one. His young Seneca daughter is a very functional female and this mating clicked. Lot 62 has a little extra frame that I think will pair nicely with a more moderate cow.





S A V GRASSLANDS 5075

P
sire

S A V GRASSLANDS 5075

Birth Date: 2/22/15 Category: 0 100%
 BW: WW: YW: #4645385

S A V RENOWN 3439

RITO 707 OF IDEAL 3407 7075
 S A V BLACKCAP MAY 4136
 S A V 004 DENSITY 4336
 S A V MADAME PRIDE 5560

ProS	HB	GM
100	48	52
36%	61%	24%

S A V MADAME PRIDE 1281

CED	BW	WW	YW	ADG	DMI	M	ME	HPG	CEM	ST	MARB	YG	CW	REA	FAT
21	-3.3	69	111	0.26	0.00	18	0	0	9	12	0.10	0.16	43	0.48	0.07
1%	25%	28%	28%	31%	0%	93%	0%	0%	17%	83%	95%	85%	8%	9%	98%



Lot 63

lot
63

RREDS GRASSLANDS K2166

Birth Date: 3/23/22 Category: 2 100%
 BW: 80 WW: 820 #4680939

S A V GRASSLANDS 5075

S A V RENOWN 3439
 S A V MADAME PRIDE 1281
 BIBER HARD DRIVE Y120
 BASIN PRIMROSE 2043

ProS	HB	GM
111	58	53
22%	43%	21%

RREDS PRIMROSE 6043

CED	BW	WW	YW	ADG	DMI	M	ME	HPG	CEM	ST	MARB	YG	CW	REA	FAT
18	-2.6	74	118	0.27	0.79	23	4	6	9	14	0.26	0.05	40	0.49	0.03
3%	35%	9%	12%	21%	8%	76%	58%	98%	18%	64%	86%	40%	5%	4%	74%

One of my favorites! The Grassland bull sires about as good of a female that you could ask for and this lead off son should follow in his footsteps. His dam is a maternal sister to Let's Roll and she is slowly positioning herself into elite status. We will sample this bull on heifers this year.



Lot 63 in early summer



Dam to lot 63



Lot 64 as a calf this summer

lot 64

RREDS GRASSLANDS K238

Birth Date: 1/27/22 Category: 3 75% AR 25% XX
 BW: 88 WW: 781 #4680969

ProS	HB	GM
107	73	34
27%	17%	58%

S A V GRASSLANDS 5075

RREDS CATHY F871

S A V RENOWN 3439
 S A V MADAME PRIDE 1281
 PIE CINCH 4126
 D R CATHY 879

CE	BW	WW	YW	ADG	DMI	M	ME	HPG	CEM	ST	MARB	YG	CW	REA	FAT
16	-2.2	73	113	0.25	0.44	23	-7	5	8	15	0.10	0.12	35	0.34	0.05
11%	43%	11%	18%	32%	2%	73%	13%	98%	27%	54%	99%	79%	12%	13%	95%

Another really cool, low birth Grasslands son. He has a little more frame than the lead off Grasslands, however he is still soft enough and good lined. Let me know if you're selling this bull's daughters.

lot 65

RREDS GRASSLANDS K2216

Birth Date: 4/19/22 Category: 2 100%
 BW: 88 WW: 856 #4680987

ProS	HB	GM
102	51	51
34%	57%	24%

S A V GRASSLANDS 5075

RREDS FLOWER F829

S A V RENOWN 3439
 S A V MADAME PRIDE 1281
 RREDS PIONEER 6904
 RREDS FLOWER 514C

CE	BW	WW	YW	ADG	DMI	M	ME	HPG	CEM	ST	MARB	YG	CW	REA	FAT
14	1.2	81	136	0.34	0.89	23	4	6	7	13	0.20	0.07	37	0.43	0.04
31%	94%	3%	2%	1%	12%	73%	56%	98%	41%	79%	94%	51%	10%	6%	85%

This young Grasslands son has the most performance and frame for his sire group. If you're after straight pounds, consider this calf.

lot 66

RREDS GRASSLANDS K2206

Birth Date: 4/12/22 Category: 2 100%
 BW: 79 WW: 759 #4681045

ProS	HB	GM
51	0	51
96%	99%	24%

S A V GRASSLANDS 5075

RREDS ADELLE G974

S A V RENOWN 3439
 S A V MADAME PRIDE 1281
 RREDS SENECA 731C
 BIEBER ADELLE 253W

CE	BW	WW	YW	ADG	DMI	M	ME	HPG	CEM	ST	MARB	YG	CW	REA	FAT
16	-2.4	55	90	0.21	0.88	17	1	7	8	5	0.46	0.17	28	0.41	0.09
11%	39%	70%	67%	61%	11%	98%	36%	98%	27%	99%	39%	94%	30%	8%	99%

A young calving ease bull that is balanced and correct.

lot 67

RREDS GRASSLANDS K2205

Birth Date: 4/12/22 Category: 2 100%
 BW: 80 WW: 715 #4688989

ProS	HB	GM
149	91	58
1%	3%	15%

S A V GRASSLANDS 5075

RREDS MISS E713

S A V RENOWN 3439
 S A V MADAME PRIDE 1281
 PIE UP FRONT 508
 BIEBER ET MISS 124T

CE	BW	WW	YW	ADG	DMI	M	ME	HPG	CEM	ST	MARB	YG	CW	REA	FAT
21	-2.2	66	110	0.28	0.77	21	5	8	11	19	0.34	0.23	40	0.17	0.06
1%	43%	29%	22%	17%	8%	86%	62%	96%	2%	10%	68%	99%	5%	40%	99%

Sure-fire calving ease bull. Not the heaviest performance bull in the sale but certainly has maternal ability built in.

lot 68

RREDSGRASSLANDS K2223

Birth Date: 4/27/22 Category: 2 100%
 BW: 82 WW: 695 #4680927

ProS	HB	GM
100	47	54
37%	66%	20%

S A V GRASSLANDS 5075

RREDS PRIMROSE 6817

S A V RENOWN 3439
 S A V MADAME PRIDE 1281
 PIE CINCH 4126
 BASIN PRIMROSE 0T43

CE	BW	WW	YW	ADG	DMI	M	ME	HPG	CEM	ST	MARB	YG	CW	REA	FAT
14	-1.3	62	98	0.23	0.59	23	-1	6	7	12	0.34	0.11	34	0.30	0.04
30%	60%	44%	48%	52%	4%	75%	28%	98%	44%	82%	68%	73%	15%	18%	89%

One of the youngest bulls in the sale, and a bull I think will get better with age.



S A V Renovation 6822,
sire of Minburn Renovation 25H

Q
sire

MINBURN RENOVATION 25H

Birth Date: 2/1/20 Category: 0 100%
BW: WW: YW: #4645401

ProS	HB	GM
86	18	68
55%	92%	10%

S A V RENOVATION 6822

MINBURN BLACKBIRD 76C

S A V RENOWN 3439
S A V MADAME PRIDE 0151
BEVERLY HILLS REBEL 103
MINBURN BLACKBIRD 47Z

CED	BW	WW	YW	ADG	DMI	M	ME	HPG	CEM	ST	MARB	YG	CW	REA	FAT
9	1.3	81	136	0.34	0.00	20	0	0	4	8	0.25	0.08	35	0.24	0.02
89%	91%	6%	5%	5%	0%	86%	0%	0%	91%	97%	80%	54%	19%	30%	52%

lot 69

RREDS RENOVATION 25H K2146

Birth Date: 3/9/22 Category: 2 100%
BW: 116 WW: 877 #4680909

ProS	HB	GM
85	37	48
63%	82%	29%

MINBURN RENOVATION 25H

RREDS FLOWER 514C

S A V RENOVATION 6822
MINBURN BLACKBIRD 76C
BIEBER ROLLIN DEEP Y118
BIEBER FLOWER 361Y

CED	BW	WW	YW	ADG	DMI	M	ME	HPG	CEM	ST	MARB	YG	CW	REA	FAT
4	3.4	94	161	0.42	1.10	24	8	6	3	13	0.18	0.18	38	0.25	0.06
99%	99%	1%	1%	1%	21%	70%	76%	98%	98%	76%	96%	96%	7%	26%	98%

Probably the thickest bull in the sale. If you don't mind a little birth weight, this bull is going to add performance like no other.

lot 70

RREDS RENOVATION 25H K2162

Birth Date: 3/24/22 Category: 2 100%
BW: 81 WW: 742 #4680979

ProS	HB	GM
155	80	75
1%	9%	3%

MINBURN RENOVATION 25H

RREDS PRIMROSE F887

S A V RENOVATION 6822
MINBURN BLACKBIRD 76C
PIE UP FRONT 508
RREDS PRIMROSE 420B

CED	BW	WW	YW	ADG	DMI	M	ME	HPG	CEM	ST	MARB	YG	CW	REA	FAT
17	-3.8	60	105	0.28	0.80	20	3	8	8	18	0.50	0.19	40	0.32	0.06
5%	17%	52%	34%	17%	9%	92%	46%	96%	22%	18%	30%	96%	6%	15%	99%

A calving ease 25H son out of one of the prettiest cows on the ranch. Fancy fronted and perfect lined.



lot 71

RREDS RENOVATION 25H K2156

Birth Date: 3/18/22 Category: 2 100%
BW: 80 WW: 722 #4681029

ProS	HB	GM
88	65	23
58%	31%	79%

MINBURN RENOVATION 25H

RREDS KIMA G905

S A V RENOVATION 6822
MINBURN BLACKBIRD 76C
RREDS SENECA 731C
RREDS KIMA E723

CED	BW	WW	YW	ADG	DMI	M	ME	HPG	CEM	ST	MARB	YG	CW	REA	FAT
16	-4.2	66	100	0.21	0.79	18	-1	7	7	15	0.15	0.13	29	0.24	0.05
13%	12%	30%	43%	60%	8%	97%	29%	98%	52%	49%	97%	83%	28%	27%	96%

Another calving ease 25H son. A great cow maker pedigree



U2Q PRESIDENT 64H

F

U2Q PRESIDENT 64H

Birth Date: 2/24/20 Category: 0 100%
 BW: WW: YW: #4637847

sire

S A V PRESIDENT 6847

COLEMAN CHARLO 0256
 S A V BLACKCAP MAY 4136
 RED BAR-E-L APPROVAL 4L
 RED U-2 ANEXA 5F

ProS	HB	GM
113	67	46
22%	29%	33%

RED U-2 ANEXA 333N

CED	BW	WW	YW	ADG	DMI	M	ME	HPG	CEM	ST	MARB	YG	CW	REA	FAT
11	1.6	73	111	0.23	0.00	19	0	0	4	16	0.09	-0.02	38	0.48	0.01
66%	93%	17%	29%	50%	0%	89%	0%	0%	89%	35%	96%	17%	14%	9%	26%



Lot 72

lot
72

RREDS PRESIDENT K2153

Birth Date: 3/17/22 Category: 2 100%
 BW: 98 WW: 887 #4680981

U2Q PRESIDENT 64H

S A V PRESIDENT 6847
 RED U-2 ANEXA 333N
 RREDS SENECA 731C
 STRA PRIMROSE 530

ProS	HB	GM
110	58	52
24%	44%	23%

RREDS PRIMROSE F835

CED	BW	WW	YW	ADG	DMI	M	ME	HPG	CEM	ST	MARB	YG	CW	REA	FAT
11	1.3	77	117	0.25	1.14	25	8	6	5	16	0.35	-0.01	41	0.62	0.02
79%	94%	5%	12%	33%	24%	56%	76%	98%	91%	35%	65%	15%	5%	1%	55%

A maternal brother to Blueprint and a great herd bull in his own right. He is as thick and wide based as you will find and was trying to be 900 lbs. at weaning time. If you need to add some performance to your cowherd this bull will do it as well as any.



Lot 73

lot
73

RREDS PRESIDENT K2104

Birth Date: 2/25/22 Category: 2 100%
 BW: 87 WW: 763 #4680921

U2Q PRESIDENT 64H

S A V PRESIDENT 6847
 RED U-2 ANEXA 333N
 BIBBER HARD DRIVE Y120
 BCLR MISS PACKER Z236

ProS	HB	GM
106	32	74
28%	88%	3%

BCLR MISS DAISY D611

CED	BW	WW	YW	ADG	DMI	M	ME	HPG	CEM	ST	MARB	YG	CW	REA	FAT
10	-0.3	79	124	0.28	0.77	22	9	6	6	11	0.46	0.03	47	0.48	0.01
86%	79%	3%	6%	17%	8%	80%	83%	98%	67%	90%	39%	29%	2%	4%	31%

One of my favorite maternal bulls in the sale. Excellent character and design that should leave the "front pasture" kind of female.

lot **74** **RREDS PRESIDENT K277**
 Birth Date: 2/17/22 Category: 2 100%
 BW: 88 WW: 803 #4680923

U2Q PRESIDENT 64H			S A V PRESIDENT 6847 RED U-2 ANEXA 333N															
RREDS ENCHANTRESS D609			PIE CINCH 4126 BASIN ENCHANTRESS 5143															
ProS	HB	GM	CED	BW	WW	YW	ADG	DMI	M	ME	HPG	CEM	ST	MARB	YG	CW	REA	FAT
126	81	45	16	-0.3	71	110	0.24	0.48	23	-5	6	7	17	0.30	0.05	27	0.23	0.02
9%	9%	34%	15%	79%	14%	23%	40%	3%	77%	17%	98%	55%	22%	79%	44%	34%	29%	58%

A super complete 64H out of a really cool Cinch daughter. This bull's dam weighs 1250 lbs. and is one of our best production cows. She has a 355-day calving interval coming with her 6th calf. Buy with confidence if you're into momma cows that last.



Dam to Lot 76 as a calf



lot **75** **RREDS PRESIDENT K2126**
 Birth Date: 3/6/22 Category: 2 100%
 BW: 84 WW: 857 #4680993

U2Q PRESIDENT 64H			S A V PRESIDENT 6847 RED U-2 ANEXA 333N															
RREDS CATHY F849			PIE CINCH 4126 D R CATHY 879															
ProS	HB	GM	CED	BW	WW	YW	ADG	DMI	M	ME	HPG	CEM	ST	MARB	YG	CW	REA	FAT
101	62	39	11	1.4	85	129	0.27	0.81	24	5	5	6	16	0.08	-0.08	44	0.51	-0.03
35%	35%	47%	75%	95%	1%	4%	19%	9%	67%	60%	98%	76%	47%	99%	4%	3%	3%	2%

One of the heavier performance bulls in the offering. If you like them a little bigger framed, consider this calf.

lot **76** **RREDS PRESIDENT K2123**
 Birth Date: 3/5/22 Category: 2 99.7% AR%
 BW: 81 WW: 717 #4689067

U2Q PRESIDENT 64H			S A V PRESIDENT 6847 RED U-2 ANEXA 333N															
RREDS LEAH F8100			C-BAR ROCKMOUNT 197C RREDS LEAH 214Z															
ProS	HB	GM	CED	BW	WW	YW	ADG	DMI	M	ME	HPG	CEM	ST	MARB	YG	CW	REA	FAT
115	66	49	14	-1.4	67	105	0.24	0.72	22	-1	7	7	15	0.33	-0.06	25	0.50	0.01
17%	27%	27%	35%	59%	27%	33%	41%	7%	80%	28%	97%	61%	51%	70%	5%	42%	4%	37%

A really interesting 64H. This calf is moderate but is stout, stout! Used to add base width and not increase stature.



The last few bulls will be sold without the parentage verification. We received the wrong semen shipment and are still determining the sire of Lots 77-81.



Lot 77 as a calf this summer

lot 77 **RREDS TRAVELER K272**
 Birth Date: 2/15/22 Category: 2 100%
 BW: 99 WW: 885 #4688985

S A V 8180 TRAVELER 004													SITZ TRAVELER 8180					
RREDS SUN KING G9109													BOYD FOREVER LADY 8003					
45% 32% 64%													BAR M BURKE 7159					
RREDS CATHY E766																		
ProS	HB	GM	CED	BW	WW	YW	ADG	DMI	M	ME	HPG	CEM	ST	MARB	YG	CW	REA	FAT
95	64	31	11	-0.2	77	115	0.24	1.98	25	16	17	8	15	0.55	0.30	37	-0.12	0.06
79%	80%	5%	15%	43%	92%	57%	98%	1%	24%	53%	22%	99%	9%	94%	99%			

This calf was almost 900 lbs. out of an itty bitty Sun King daughter. He is heavy muscled and thick and stands on a really good foot.

lot 78 **RREDS TRAVELER 004 K292**
 Birth Date: 2/19/22 Category: 2 100%
 BW: 97 WW: 764 #4681005

S A V 8180 TRAVELER 004													SITZ TRAVELER 8180					
RREDS PRIMROSE 8929													BOYD FOREVER LADY 8003					
48% 46% 52%													RREDS SENECA 731C					
BASIN PRIMROSE 4167																		
ProS	HB	GM	CED	BW	WW	YW	ADG	DMI	M	ME	HPG	CEM	ST	MARB	YG	CW	REA	FAT
94	57	37	11	-0.5	71	111	0.25	1.71	17	14	16	8	15	0.40	0.18	37	0.24	0.06
72%	75%	15%	21%	32%	74%	99%	96%	3%	29%	58%	53%	96%	10%	27%	99%			

This bull's mother is one of the most beautiful cows on the ranch. He has a little extra frame and I think he will work nice on a moderate set of cows.

lot 79 **RREDS TRAVELER 004 K282**
 Birth Date: 2/18/22 Category: 2 100%
 BW: 98 WW: 745 #4680891

S A V 8180 TRAVELER 004													SITZ TRAVELER 8180					
BROWN MS CONQUEST 22703													BOYD FOREVER LADY 8003					
30% 20% 58%													HXC CONQUEST 4405P					
BROWN MS COMMITMENT X7537																		
ProS	HB	GM	CED	BW	WW	YW	ADG	DMI	M	ME	HPG	CEM	ST	MARB	YG	CW	REA	FAT
105	71	34	10	0.1	70	109	0.25	1.72	18	12	16	7	17	0.45	0.04	23	0.21	0.02
82%	84%	18%	24%	35%	74%	97%	92%	4%	50%	22%	41%	34%	50%	32%	47%			

This calf got hoof rot this summer and it set him back, but he has responded well and is sound. If there is any problem with this bull, we will take him back. He was too good to not put in the sale and his dam is a ten-year-old cow that has done a really good job.

lot 80 **RREDS TRAVELER 004 K253**
 Birth Date: 2/4/22 Category: 2 100%
 BW: 82 WW: 753 #4681047

S A V 8180 TRAVELER 004													SITZ TRAVELER 8180					
RREDS PRIMROSE G983													BOYD FOREVER LADY 8003					
25% 16% 56%													PELTON WIDELOAD 788					
BASIN PRIMROSE 0T43																		
ProS	HB	GM	CED	BW	WW	YW	ADG	DMI	M	ME	HPG	CEM	ST	MARB	YG	CW	REA	FAT
109	73	35	13	0.1	64	102	0.24	1.78	24	10	16	9	17	0.58	0.31	27	-0.20	0.07
48%	84%	37%	39%	42%	79%	67%	88%	3%	15%	30%	18%	99%	36%	98%	99%			

This bull looks like the female maker kind. He has a real traditional Angus skull and a great Angus presence.

lot 81 **RREDS TRAVELER 004 K290**
 Birth Date: 2/18/22 Category: 3 50% AR 50% XX
 BW: 94 WW: 720 #4681039

S A V 8180 TRAVELER 004													SITZ TRAVELER 8180					
RREDS PRIMROSE G983													BOYD FOREVER LADY 8003					
71% 74% 50%																		
ProS	HB	GM	CED	BW	WW	YW	ADG	DMI	M	ME	HPG	CEM	ST	MARB	YG	CW	REA	FAT
80	43	38	13	-1.0	55	83	0.17	0.00	20	0	0	10	10	0.45	0.29	14	-0.33	0.06
46%	67%	70%	78%	83%	1%	93%	32%	98%	6%	95%	41%	99%	84%	99%	99%			

Somebody has to be the last bull, but this bull won't hurt you anywhere. He is a good, well balanced Angus bull.



Rhodes

Red Angus Ranch

PO BOX 277
16008 357TH AVE.
FAULKTON, SD 57438

*Annual
Production
Sale*

Tuesday, February 14, 2023

2 p.m. CST - At the Ranch - 4.5 mi. E & 2.5 mi. N of Faulkton, SD

*Selling
81 Bulls*

Red Angus & Black
Red-Carrier Angus Bulls



DVAuction